

FIELD SCAN TO FINISHED PLAT... CARLSON POINT CLOUD

Carlson brings Point Cloud data to the world of CAD design

Use Carlson Point Cloud with a wide variety of popular scanners and large point formats.

Transform clouds of data into usable data for design and analysis.

Experience the power of Carlson Software's industry leading Field-to-Finish inside Point Cloud.

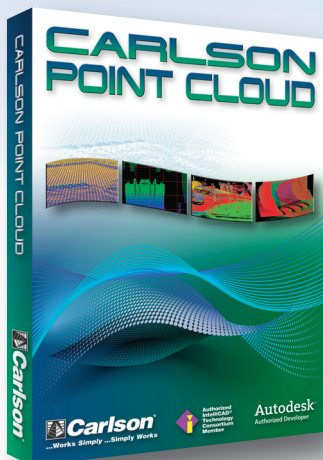
Put Your Scanned Data to Use with Carlson Point Cloud

- Process up to one billion points with Carlson Software ease-of-use
- Quickly "clean the cloud" to get to "bare earth"
- Easily determine volumes to bring back into CAD
- Drape images over point cloud meshes
- Export point cloud scenes to PDF files to communicate with consultants and clients
- Extract feature data like diameter, height and drip diameter from poles, trees and hydrants

Find Out More NOW!

Call or visit Carlson Software:

800-989-5028 • www.carlsonsw.com



Carlson Point Cloud works on:

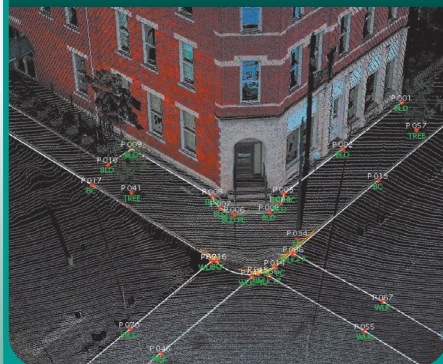
- AutoCAD versions 2004 to current
- IntelliCAD 6.6 (built-in)
- Windows XP, Vista and 7 (32 or 64 bit)

Field



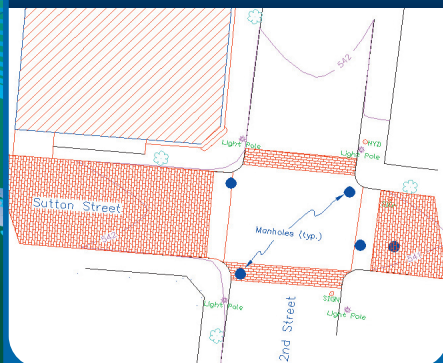
Read scan data from many instruments

To



View and process up to 1 billion points

Finish



Field-to-Finish from scanned data!



Carlson

...Works Simply ...Simply Works



Free Technical Support
By Phone, Email, and Web

FIELD SCAN TO CAD-READY DATA... CARLSON POINT CLOUD

Top New Features

Extract Bare Earth: Removes landscape, utilities and other non-surface features for a clean surface.

Draw Polyline: New routines for high and low edge snaps for polylines and full curb polyline automation.

Larger Point Cloud Files: An enhanced Point Cloud engine now allows up to one billion points per cloud.

Point Cloud Text: Add annotation to your Point Cloud scenes to improve communication with co-workers, supervisors and clients.

Property Layer Manager: Manage layers for points, polylines, and text from inside your Point Cloud scene.

Drape Images: Select images from multiple formats to drape over meshes created from your Point Cloud.

Scan Data Commands:

- Import Scan – Select from many different manufacturers for scan file formats.
- Import Target Points – Import target point locations for use in scan registration.
- Import Control Points – use control points to register scans and draw them in CAD for use in design.
- Register Scans – Combine multiple scans using the intuitive dialog interface to register scans and view all scans as a single point cloud.

Point Commands:

- Snap to Point Cloud features – Snap points to low points, high points low and high edges. Snap points to Trees to get diameter, height and drip diameter. Snap to poles for height and diameter labels.
- Use Field-to-Finish point Coding – use your own .fld file to identify features and draw polylines. Save the coordinate points and draw the same Field-to-Finish in CAD.
- Snap to Polylines – Carlson Point Cloud now gives you the power to snap polylines and points to polyline end points, mid-points and more.

Cloud Commands:

- Import Cloud – In addition to scanner formats, many other files can be imported as Point Clouds, including LIDAR, Leica, DEM and generic ASCII files.
- Clean Cloud – Reduce outliers and other extraneous data from clouds quickly.
- Resample Cloud – Reduce redundant data through resampling of exist point cloud files.

Mesh Commands:

- Create Mesh – Use point clouds to create meshes to use for exporting to CAD, extracting other data or viewing and analysis.
- Simplify Mesh – Reduce vertices and faces before exporting to CAD.
- Extract Profile – Extract profiles from meshes using on-the-fly location selection or defined Centerlines (.cl files). Save as .pro files.
- Extract Sections – Extract sections using on-the-fly location selection or defined centerlines (.cl files). Save as .set files. View in 3D.
- Extract Contours – Use the mesh to extract and save contours at user defined intervals. View the contours in 3D clean and refine the contours and draw them in CAD.

